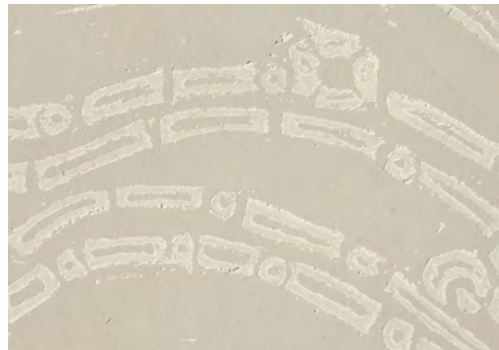
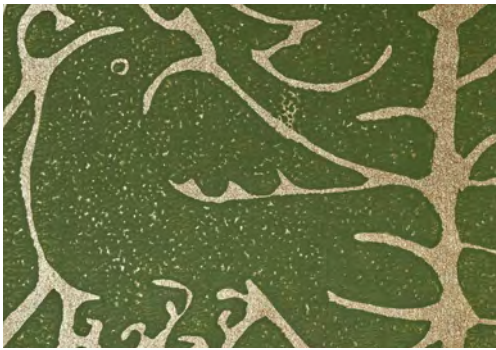
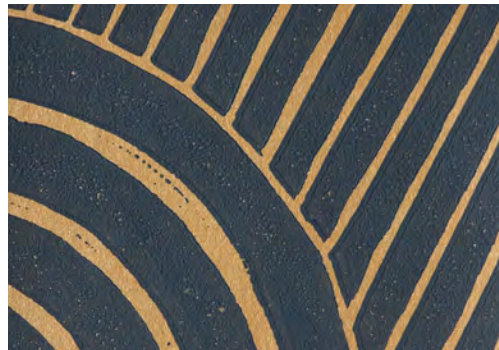


ADRIENNE NEFF DESIGN SERVICES, LLC

2016
UZU WALLPAPER
COLLECTION



PRODUCT DESIGN FINALIST 2015
NYC&G
INNOVATION IN DESIGN AWARDS





Photography: Grievs Anderson

HAND BLOCK PRINTING PROCESS

The papers are made to order printed locally by hand. We are pleased that Christianson Lee Studios is now hand block printing the collection. A fine decorative painting company, they bring the excellence of their quality, experience, and precision for a new and improved Uzu line. Each paper is created using 18th century printing techniques. The wallpaper paints are water-based inks, and all methods of production are friendly to the environment. The papers measure 27” wide and are Class A fire rated for safety. Catering to both the residential and hospitality client, the collection is available exclusively To The Trade.

ADRIENNE NEFF DESIGN SERVICES, LLC
2016 UZU WALLPAPER COLLECTION



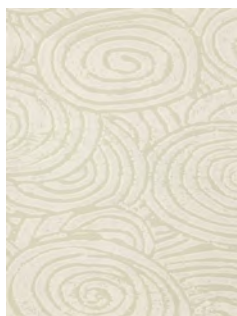
Photography: Don Freeman

UZU

Uzu (spiral water in Japanese) pays homage to 17th century Japanese ceramics. This delicate pattern can be interpreted in a number of ways: cloud formations or pools of swirling water: it is both an organic and a modern design.

width: 27"; vertical repeat: 28.25"; length: 3, 4, or 5 yard panels

Seven standard colors; custom colors available



Uzu: 101
Crema & Foam



Uzu: 102
Granite Gray Metallic
& Ink Blue



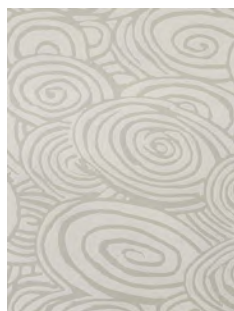
Uzu: 105
Mushroom & Foam



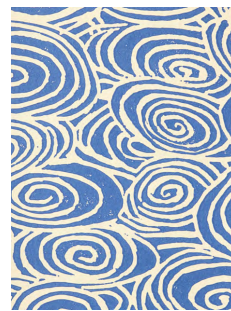
Uzu: 106
Foam & Straight Pearl



Uzu: 107
Granite Gray & Ocean Blue



Uzu: 108
Morning Dove & Foam



Uzu: 109
Crema & Blue Sea

ADRIENNE NEFF DESIGN SERVICES, LLC
2016 UZU WALLPAPER COLLECTION



Photography: Grievs Anderson

YAMANOMA

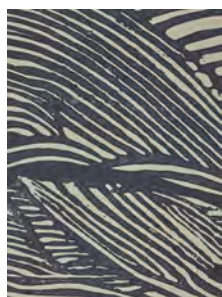
Yamanoma (hillside in Japanese) evokes the spirit of 16th century Japanese screens. The gently rolling pattern may be mountains, cloud formations, or waves in the ocean. The design is organic and also highly stylized; it can be traditional or modern in its interpretation.

width: 27"; vertical repeat: 20"; length: 3, 4, or 5 yard panels

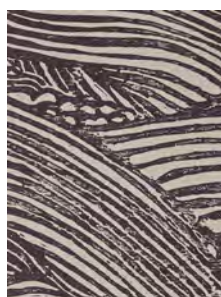
Ten standard colors; custom colors available



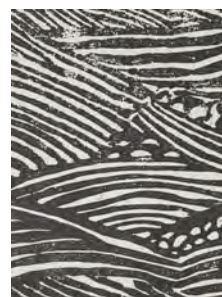
Yamanoma: 201
Crema & Foam



Yamanoma: 202
Granite Gray & Ink Blue



Yamanoma: 203
Granite Gray & Aubergine



Yamanoma: 204
Granite Gray & Charcoal



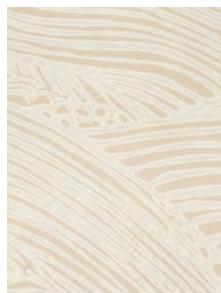
Yamanoma: 205
Mushroom & Foam



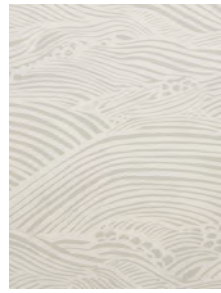
Yamanoma: 206
Foam & Straight Pearl



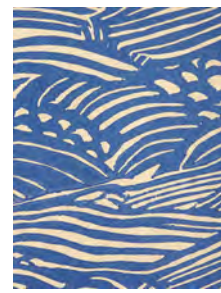
Yamanoma: 207
Granite Gray &
Grass Green



Yamanoma: 208
Sand & Foam



Yamanoma: 209
Morning Dove & Foam



Yamanoma: 210
Crema & Blue Sea

ADRIENNE NEFF DESIGN SERVICES, LLC
2016 UZU WALLPAPER COLLECTION



Photography: Don Freeman

JAGGED AGATE

Jagged Agate is an abstract interpretation of the patterns formed by cut agate rock. It is a dynamic design that conveys movement and vibration, despite it portraying solid rock.

width: 27"; vertical repeat: 19.5"; length: 3, 4, or 5 yard panels

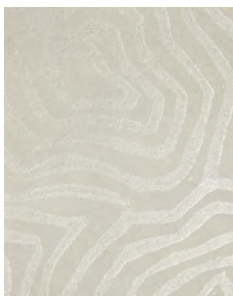
Six standard color ways; custom colors available



Jagged Agate: 301
Granite Gray &
Grass Green



Jagged Agate: 302
Granite Gray &
Charcoal



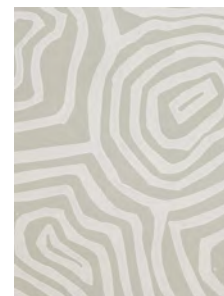
Jagged Agate: 303
Granite Gray &
Straight Pearl



Jagged Agate: 306
Mushroom & Foam



Jagged Agate: 307
Crema & Foam



Jagged Agate: 308
Morning Dove
& Foam

ADRIENNE NEFF DESIGN SERVICES, LLC

2016 UZU WALLPAPER COLLECTION



Photography: Andy French

RENJYU

Renjyu (spiral repeat in Japanese) is inspired by Japanese Neolithic pottery designs found ca 2,000 B.C. This large scale pattern beguiles and bewitches the viewer with its twists and twirls, like an asp rising out of a basket.

width: 27"; vertical repeat: 21.75"; length: 3, 4, or 5 yard panels

Six standard colors; custom colors available



Renjyu: 401
Crema & Foam



Renjyu: 402
Warm Gold
& Verdigris



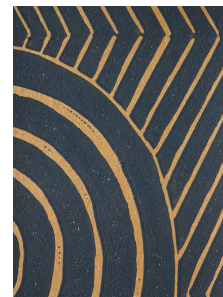
Renjyu: 406
Mushroom & Foam



Renjyu: 407
Straight Pearl
& Foam



Renjyu: 409
Morning Dove
& Foam



Renjyu: 410
Warm Gold &
Ink Blue

ADRIENNE NEFF DESIGN SERVICES, LLC
2016 UZU WALLPAPER COLLECTION



Photography: Gieves Anderson

ACOMA

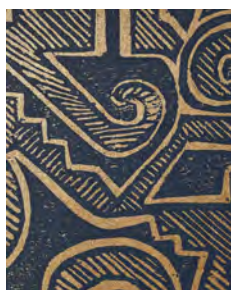
This lively pattern is inspired by Pueblo Indian ceramic water jars circa 1,000 A.D. This primal pattern is the perfect companion to a room full of French 1940s antiques or is it just as suitable for the walls of a spirited Mexican restaurant.

width: 27"; vertical repeat: 15.5"; length: 3, 4, or 5 yard panels

Five standard color ways; custom colors available



Acoma: 501
Crema & Foam



Acoma: 502
Warm Gold & Ink
Blue



Acoma: 503
Crema & Earth



Acoma: 507
Mushroom & Foam



Acoma: 508
Carnation Red &
Cream

ADRIENNE NEFF DESIGN SERVICES, LLC
2016 UZU WALLPAPER COLLECTION



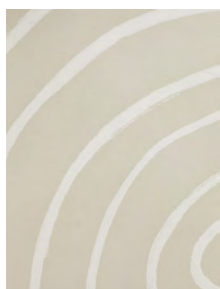
Photography: Don Freeman

CLOSED ONION

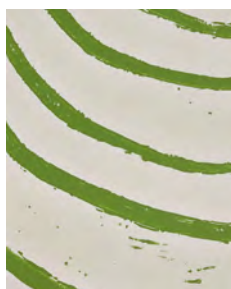
Closed Onion is an abstract geometric celebration of the humble onion. Two design versions are available. One is closed. The second is slightly open.

width: 27"; vertical repeat: 36"; length: 3, 4, or 5 yard panels

Three standard color ways; custom colors available



Closed Onion: 601
Crema & Foam



Closed Onion: 602
Granite Gray &
Grass Green



Closed Onion: 603
Mushroom & Foam

ADRIENNE NEFF DESIGN SERVICES, LLC
2016 UZU WALLPAPER COLLECTION



Photography: Andy French

OPEN ONION

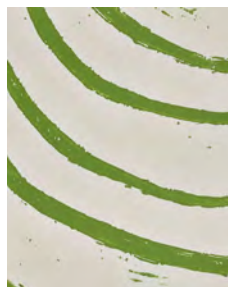
Open Onion is an abstract geometric celebration of the humble onion. Two design versions are available. One is closed. The second is slightly open.

width: 27"; vertical repeat: 36"; length: 3, 4, or 5 yard panels

Two standard color ways; custom colors available



Open Onion: 701
Crema & Earth



Open Onion: 703
Granite Gray & Grass Green

ADRIENNE NEFF DESIGN SERVICES, LLC
2016 UZU WALLPAPER COLLECTION



Photography: Gieves Anderson

FISHERMAN'S ROBE

Fisherman's Robe emulates stylized rolling waves as seen from a fisherman's boat.

width: 27"; vertical repeat: 22.75"; length: 3, 4, or 5 yard panels

Five standard color ways; custom colors available



Fisherman's Robe: 801
Crema & Foam



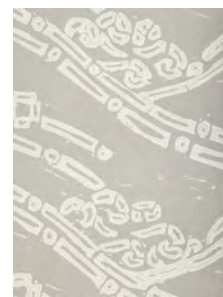
Fisherman's Robe: 803
Powder Gray & Silver
Metallic



Fisherman's Robe: 804
Morning Dove & Foam



Fisherman's Robe: 805
Mushroom & Foam



Fisherman's Robe: 806
Lilac & Cloud

ADRIENNE NEFF DESIGN SERVICES, LLC
2016 UZU WALLPAPER COLLECTION



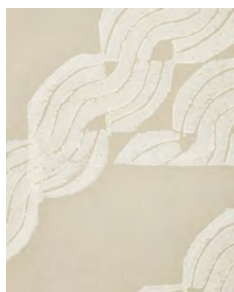
Photography: Gieves Anderson

GREEN LEAVES

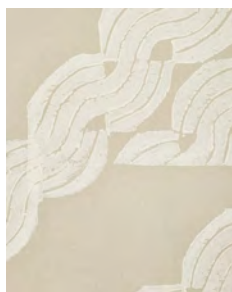
Green Leaves is a modern graphic interpretation of leaves on a branch.

width: 27"; vertical repeat: 27"; length: 3, 4, or 5 yard panels

Six standard color ways; custom colors available



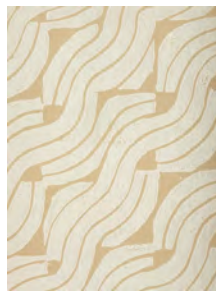
Green Leaves: 901
Crema & Foam



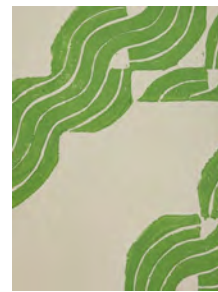
Green Leaves: 904
Morning Dove
& Foam



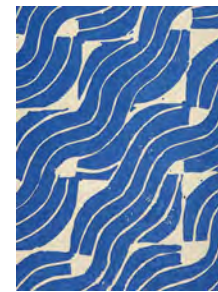
Green Leaves: 906
Lilac & Cloud



Green Leaves: 907
Mushroom & Foam



Green Leaves: 908
Granite Gray &
Grass Green



Green Leaves: 909
Crema & Blue Sea

ADRIENNE NEFF DESIGN SERVICES, LLC
2016 UZU WALLPAPER COLLECTION



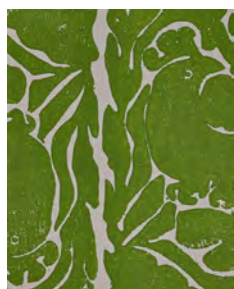
Photography: Gieves Anderson

BIRD IN TREE

Bird in Tree takes its cue from traditional folk art textiles of Mexico.

width: 27"; vertical repeat: 12.75"; length: 3, 4, or 5 yard panels

Seven standard color ways; custom colors available



Bird In Tree: 1001
Granite Gray & Grass Green



Bird In Tree: 1002
Crema & Earth



Bird In Tree: 1003
Foam & Crema



Bird In Tree: 1004
Granite Gray & Charcoal



Bird In Tree: 1005
Warm Gold & Verdigris



Bird In Tree: 1006
Morning Dove & Foam



Bird In Tree: 1007
Crema & Blue Sea

ADRIENNE NEFF DESIGN SERVICES, LLC
2016 UZU WALLPAPER COLLECTION



Photography: Gieves Anderson

DECO VASE

This pattern is inspired by a French 1920s vase.

width: 27"; vertical repeat: 20"; length: 3, 4, or 5 yard panels

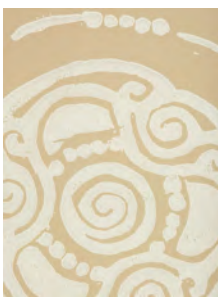
Five standard color ways; custom colors available



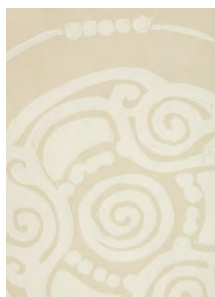
Deco Vase: 1101
Terracotta &
Granite Gray



Deco Vase: 1102
Morning Dove &
Foam



Deco Vase: 1103
Mushroom &
Foam



Deco Vase: 1104
Crema & Foam



Deco Vase: 1105
Granite Gray &
Grass Green